



Almadar Cloud Portal User Guide

Guide No.	0009
Name	Installing Pfsense-SSL-VPN agent on the clients
Version	V1.0
Date	25-Jan-2022

Copyright © Almadar Aljadid. 2022. All rights reserved.

No part of this document may be reproduced or transmitted in any form or by any means without prior written consent of Almadar Aljadid.

Notice

The purchased products, services and features are stipulated by the contract made between Almadar Aljadid and the customer. All or part of the products, services and features described in this document may not be within the purchase scope or the usage scope. Unless otherwise specified in the contract, all statements, information, and recommendations in this document are provided "AS IS" without warranties, guarantees or representations of any kind, either express or implied.

The information in this document is subject to change without notice. Every effort has been made in the preparation of this document to ensure accuracy of the contents, but all statements, information, and recommendations in this document do not constitute a warranty of any kind, express or implied.

Almadar Aljadid

Address: City sport Gurji

Website: <https://www.almadar.ly>

Email: cloudsupport@almadar.ly

Phone: 0919190544

Version History:

Date	Ver.	Author	Description	Approved by
25-Jan-2022	1.0	Mohamed Swaih	Initial Release	Emhemed Mselkhi

Introduction:

This document is a guide on how to install Pfsense-SSL-VPN agent on the clients.

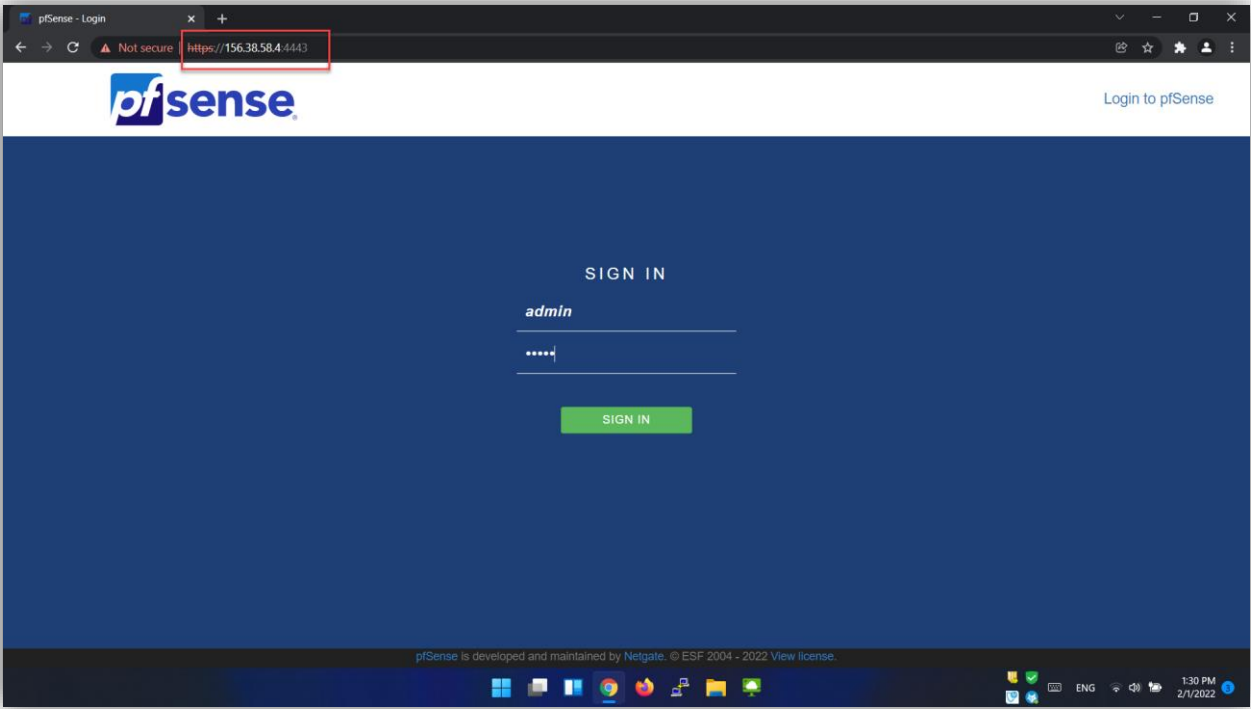
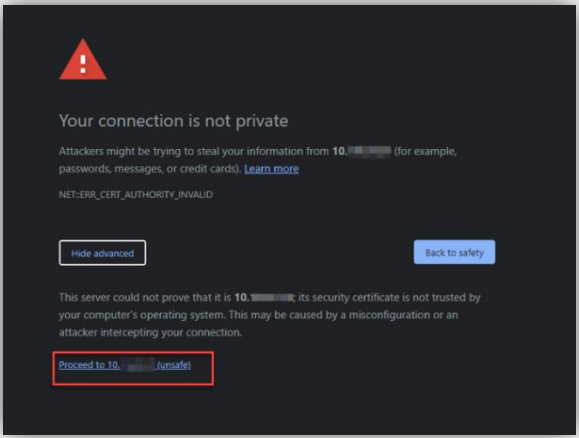
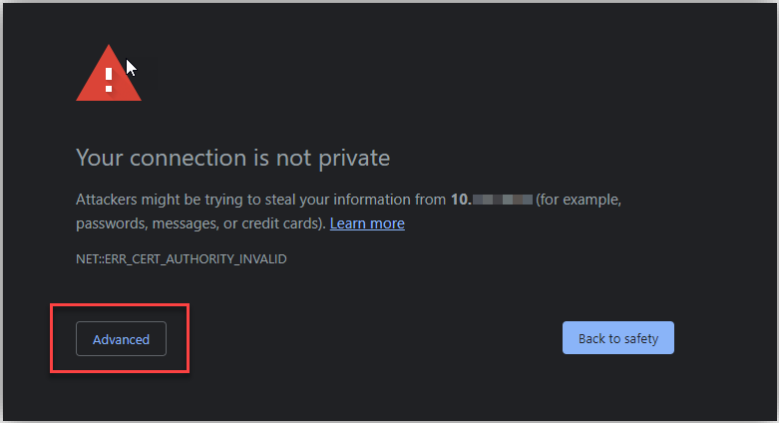
Contents:

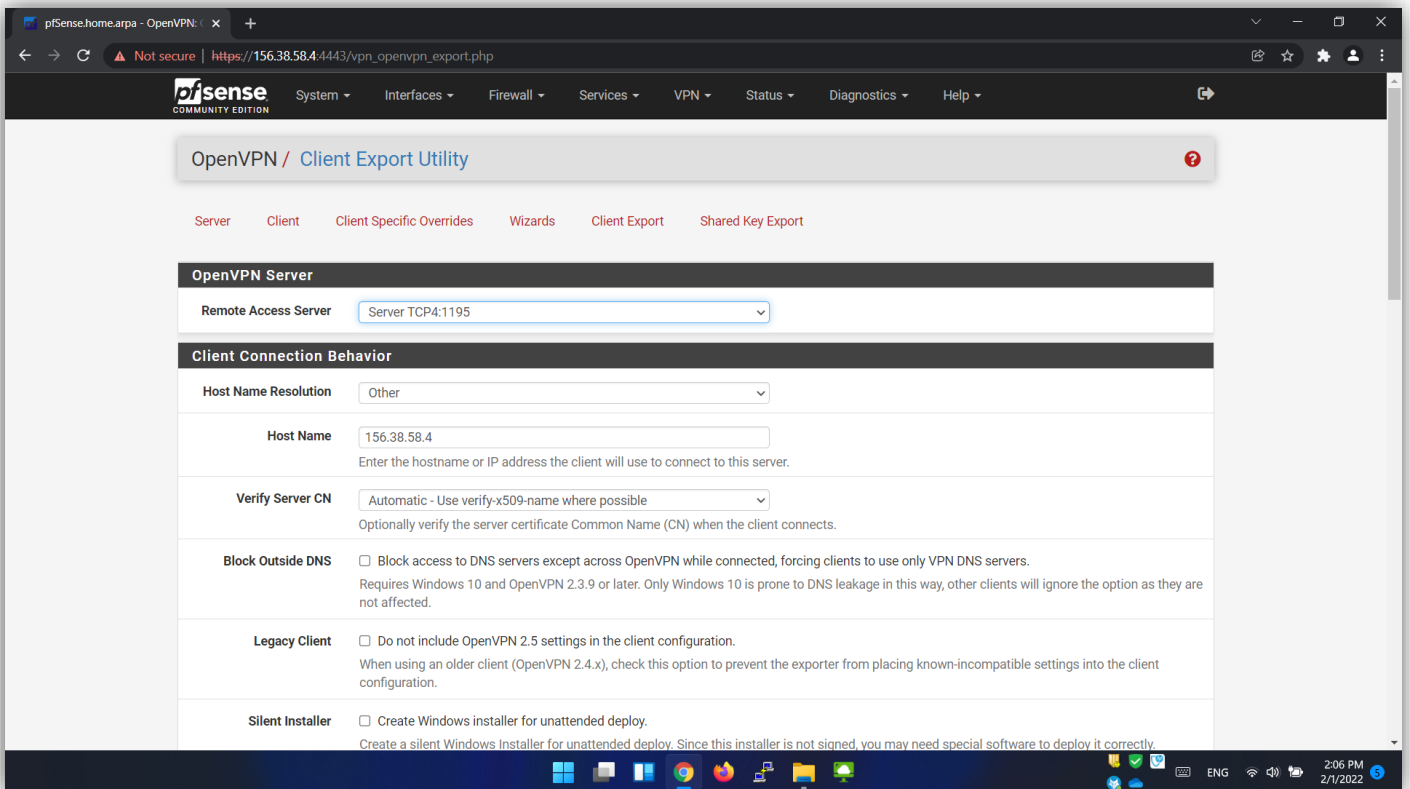
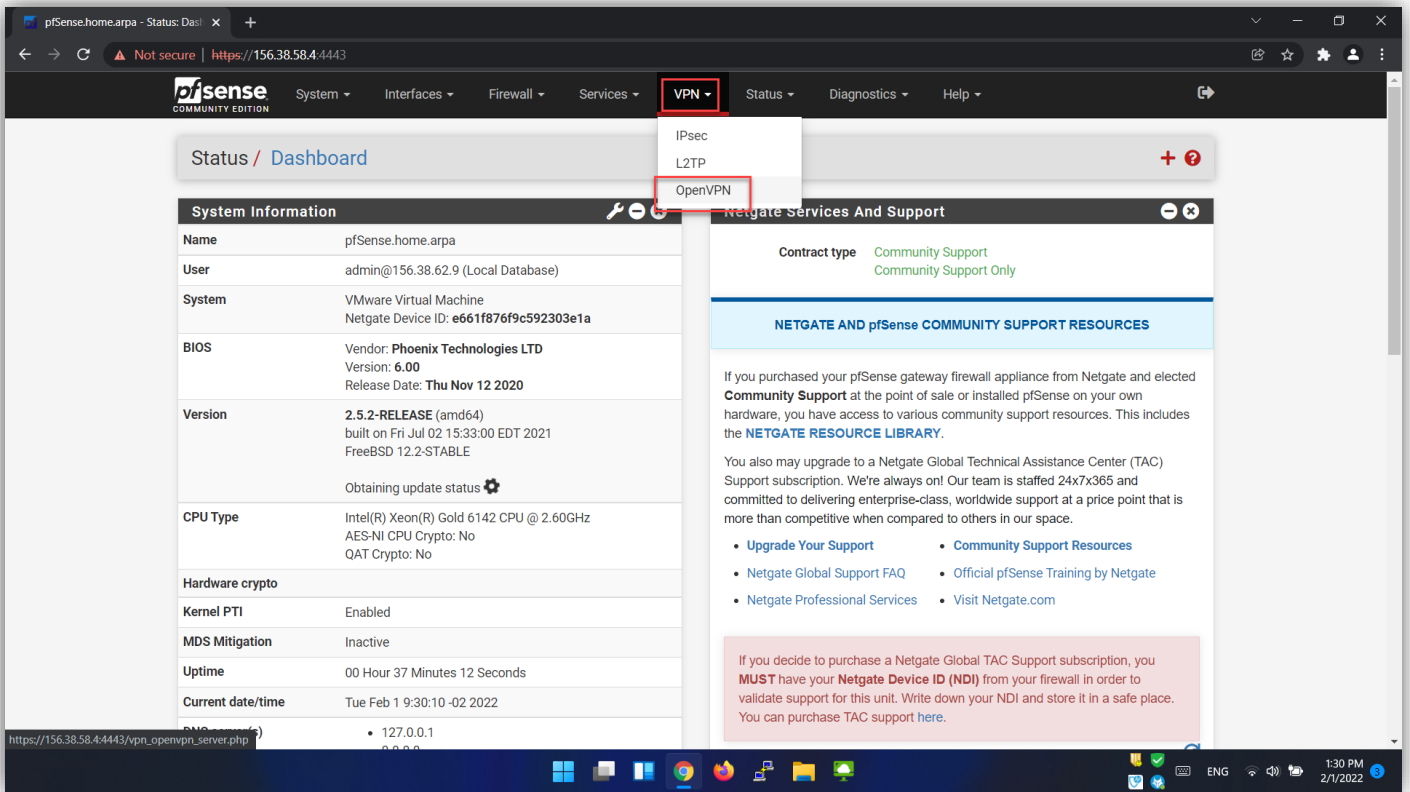
1. Access the URL as in the format below to download SSL VPN agent.....	4
2. In this step we conducted a test after connecting to the VPN agent, where this IP 10.0.1.1 is for a windows VM residing on the subnet that's allowed to be reached through VPN.	10

1. Access the URL as in the format below to download SSL VPN agent.

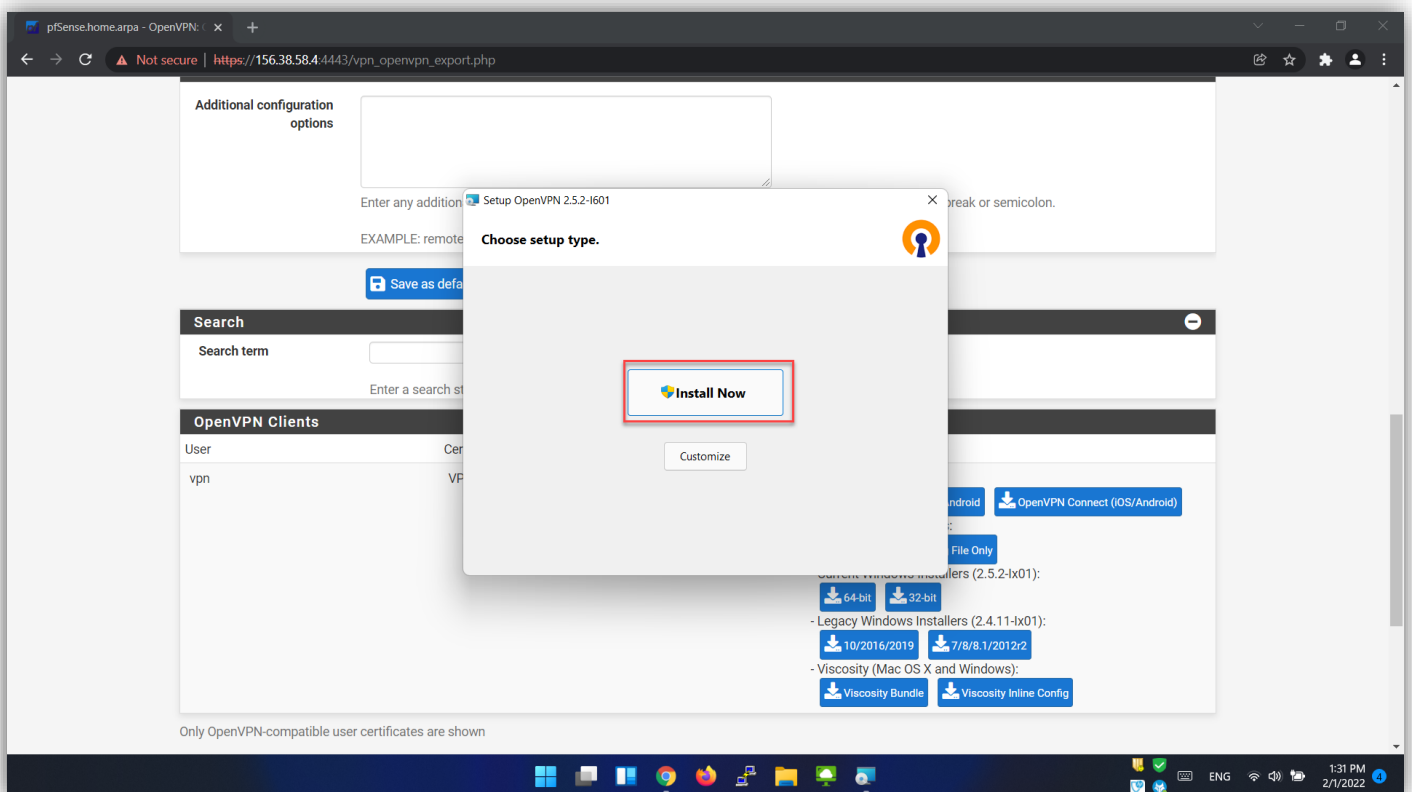
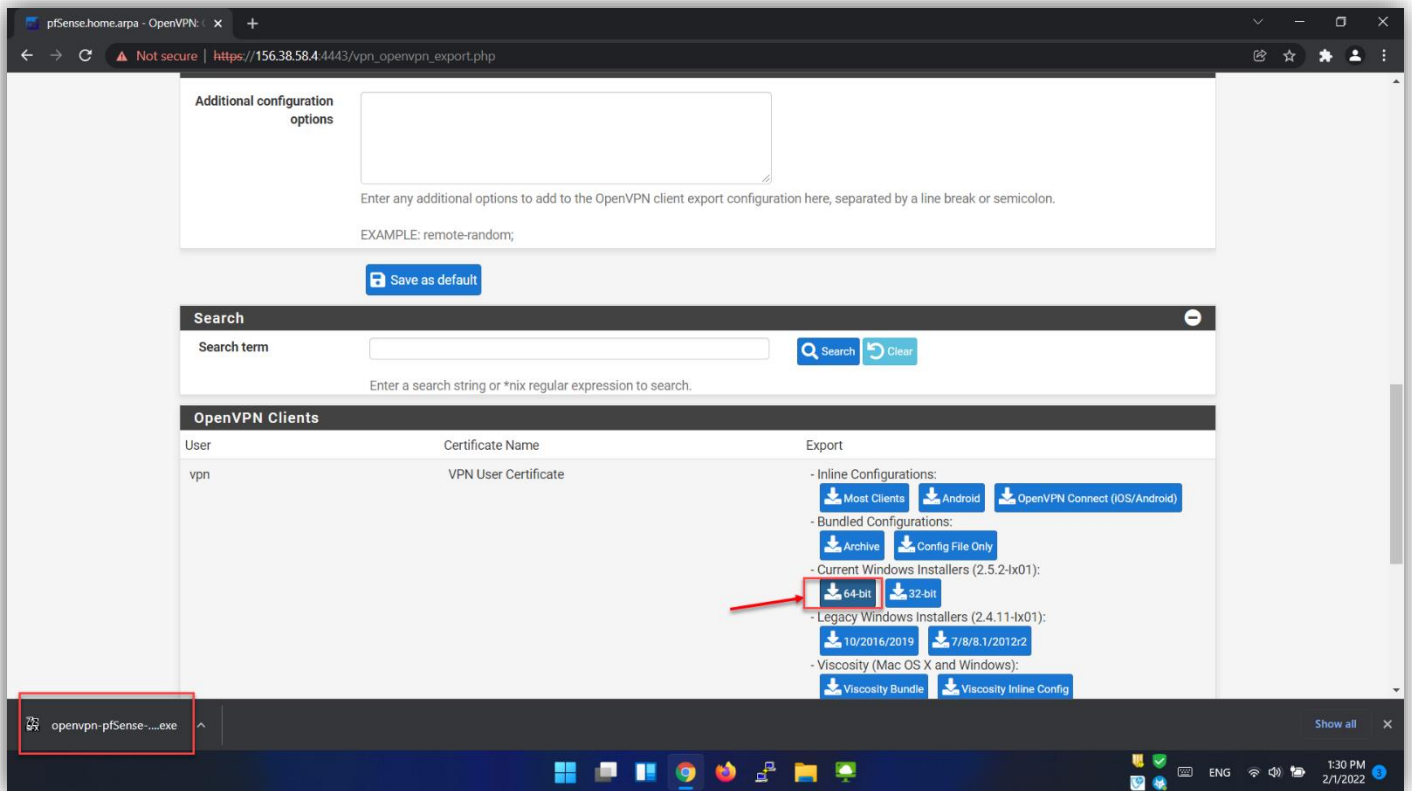
Use your browser to navigate to SSL VPN portal by entering

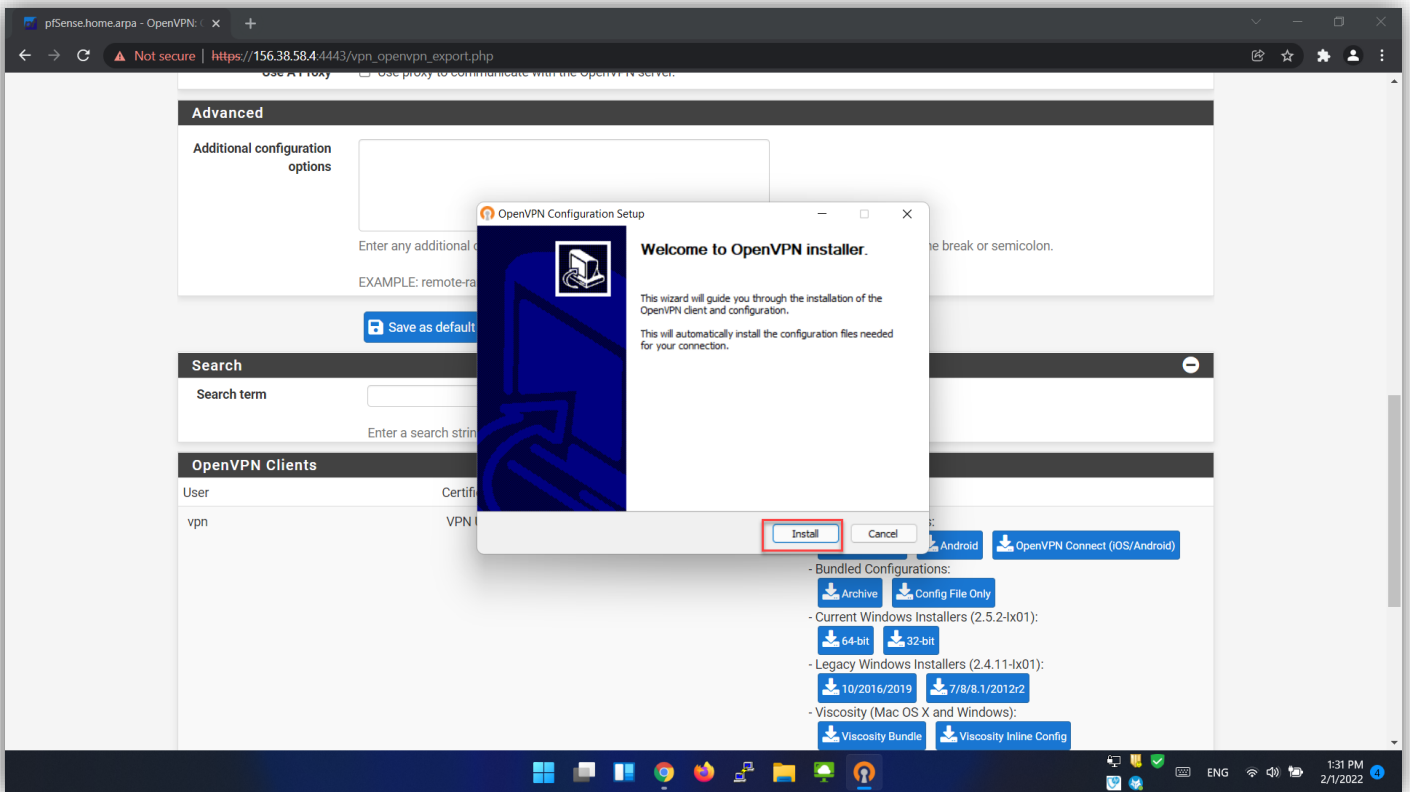
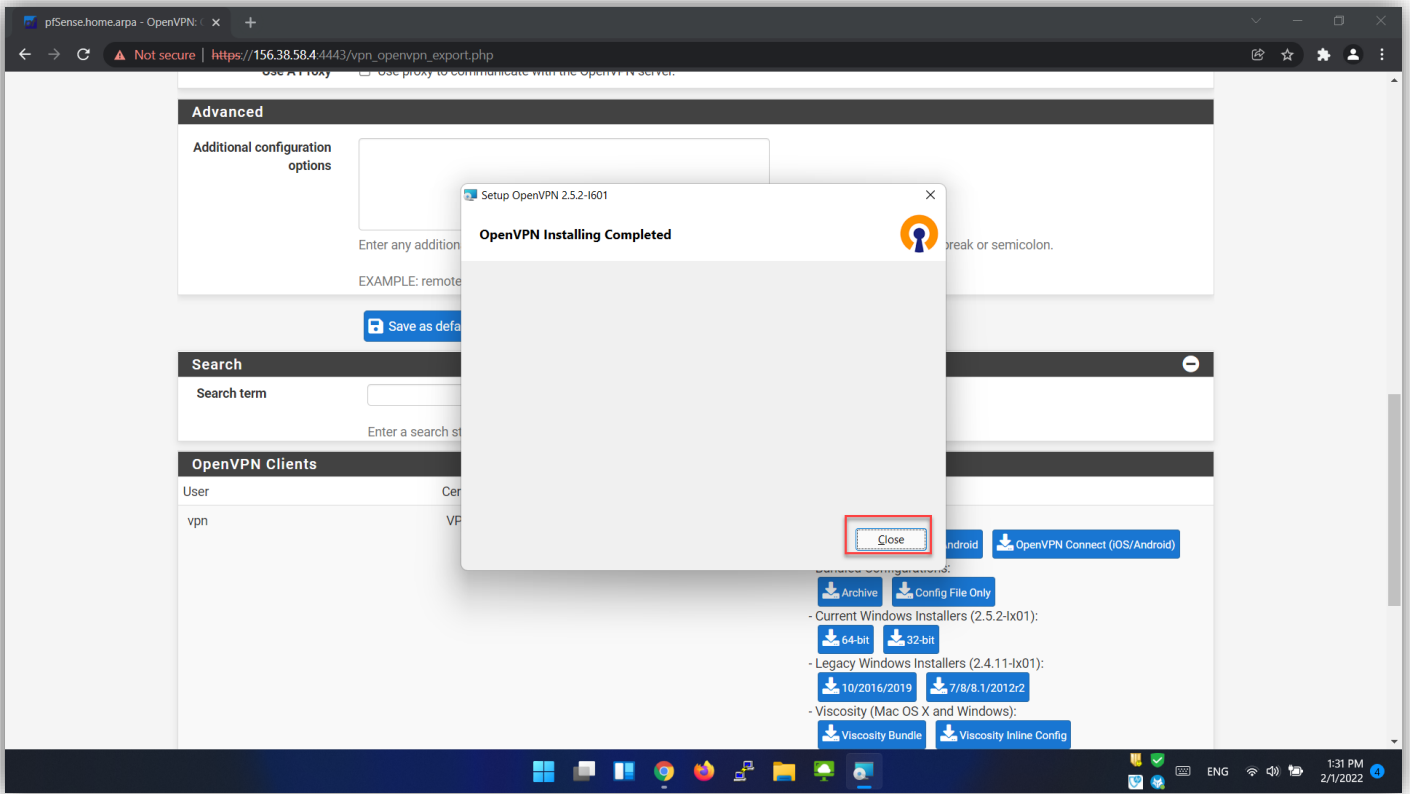
"https:\\your-public-IP:port number specified in the firewall" (configured in the Edge gateway)

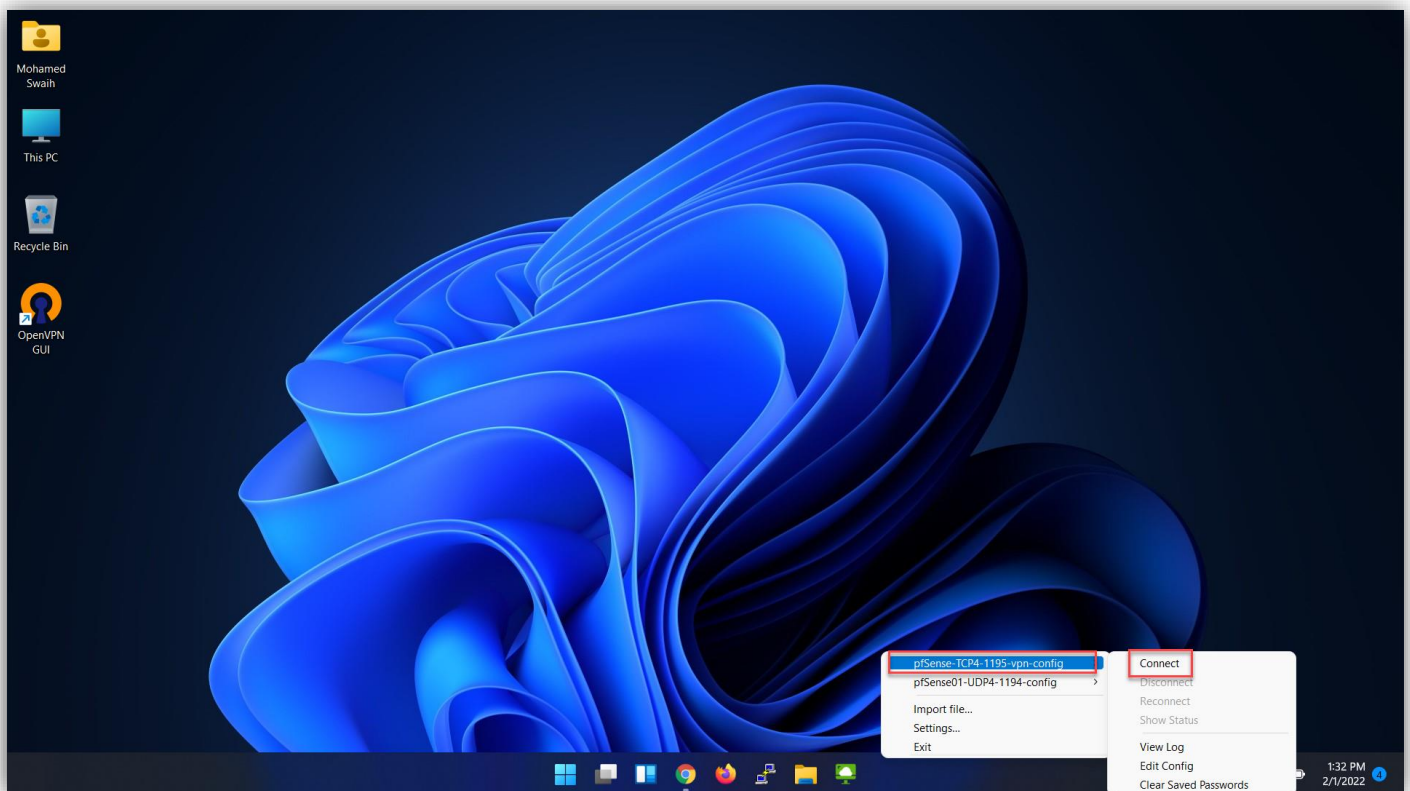
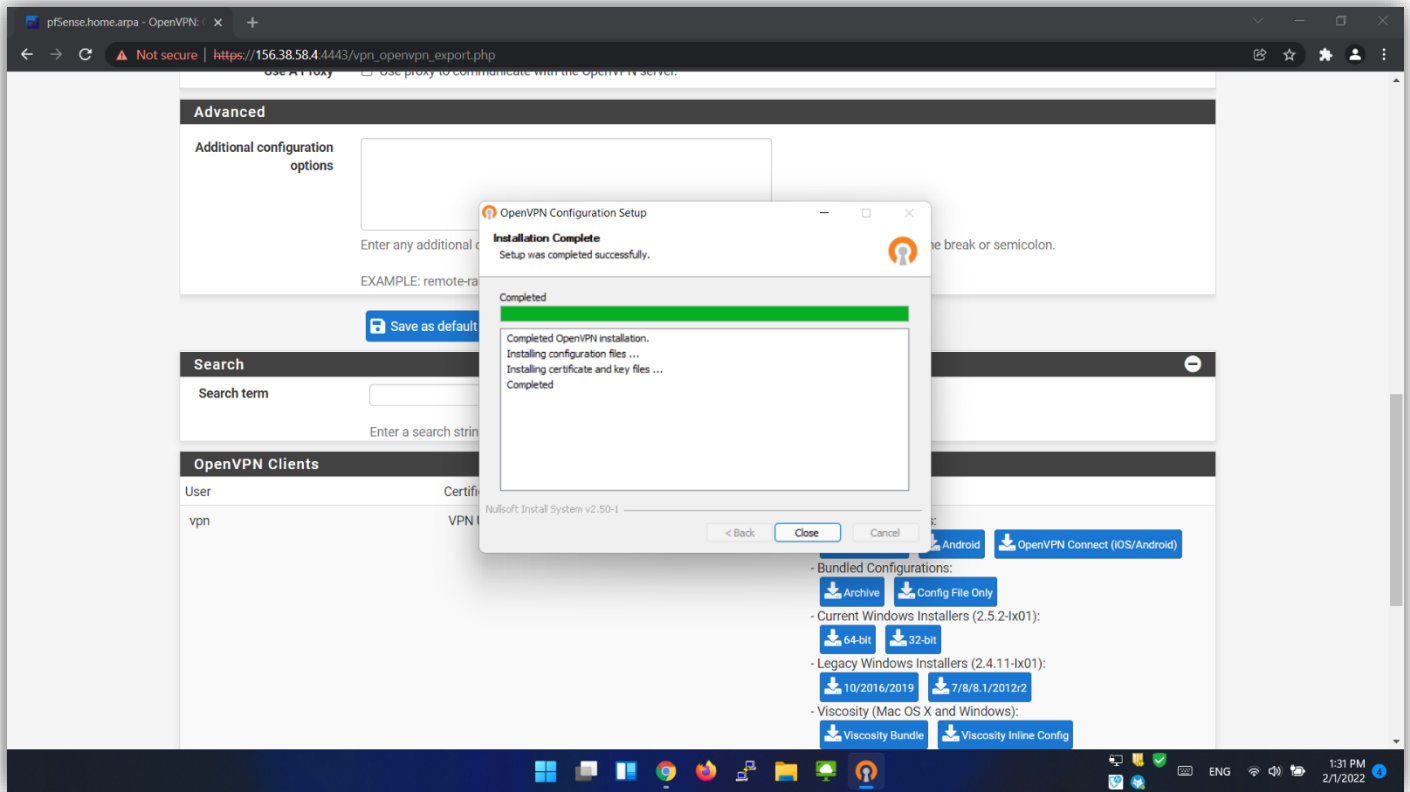


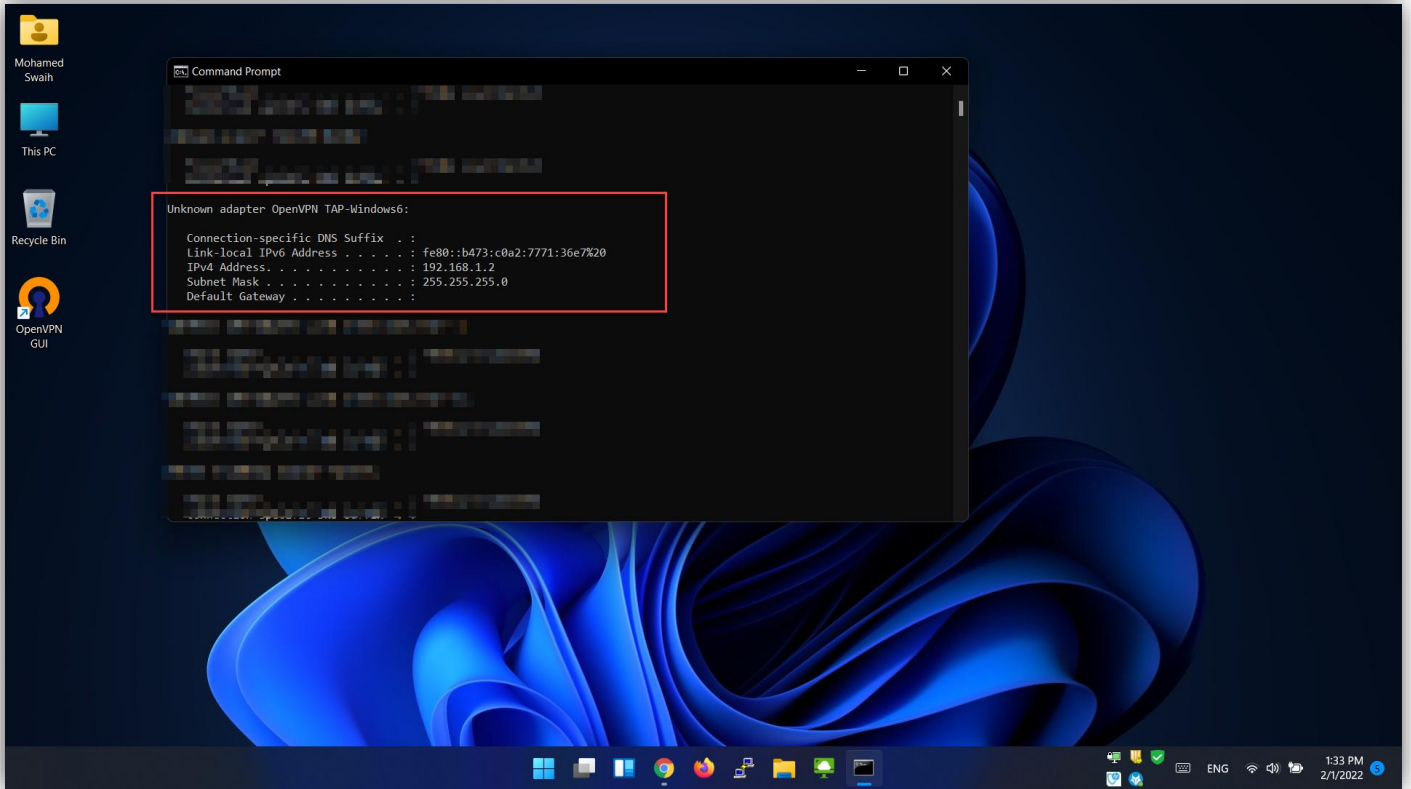


After downloading the agent click on it and install it as shown below

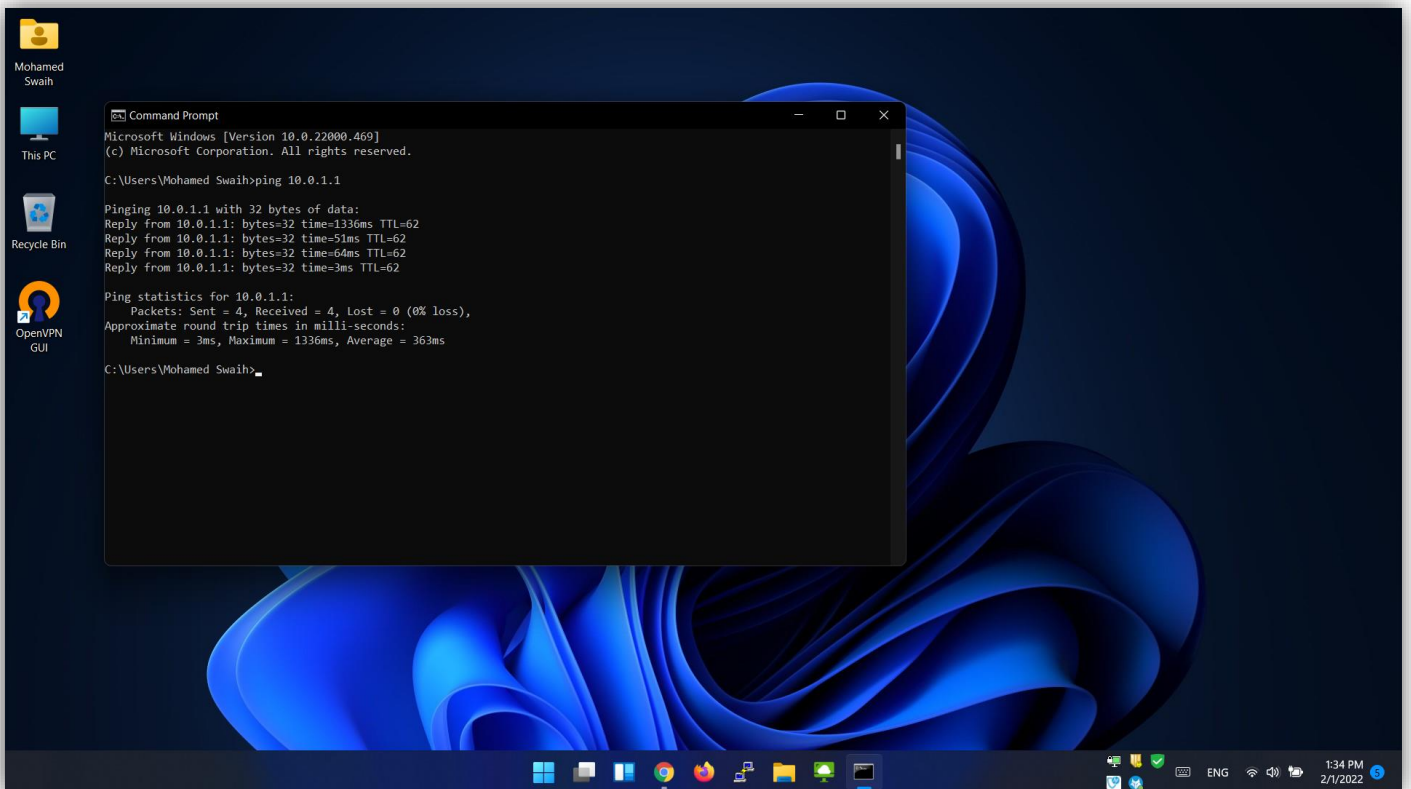








2. In this step we conducted a test after connecting to the VPN agent, where this IP 10.0.1.1 is for a windows VM residing on the subnet that's allowed to be reached through VPN.



Since the VM is a windows here we tested the remote desktop connection

